

# QX RESOURCES

**ASX:QXR**



## THE X FACTOR IN BATTERY MINERALS



**QX Resources**  
QXR - The X Factor in Battery Minerals Supply

LITHIUM - BRINE & HARD ROCK  
NICKEL AND COPPER-AU-MO

OCTOBER 2023

# DISCLAIMER

# QX RESOURCES



## FORWARD LOOKING STATEMENTS

This presentation by QX Resources Limited (“Company”, “QXR”) contains forecasts, projections and forward-looking information. Although the Company believes that its expectations, estimates and forecast outcomes are based on reasonable assumptions it can give no assurance that these will be achieved. Expectations and estimates and projections and information provided by the Company are not a guarantee of future performance and involve unknown risks and uncertainties, many of which are out of QXR’s control. Actual results and developments will almost certainly differ materially from those expressed or implied. QXR has not audited or investigated the accuracy or completeness of the information, statements and opinions contained in this announcement. To the maximum extent permitted by applicable laws, QXR makes no representation and can give no assurance, guarantee or warranty, express or implied, as to, and takes no responsibility and assumes no liability for the authenticity, validity, accuracy, suitability or completeness of, or any errors in or omission from, any information, statement or opinion contained in this report and without prejudice, to the generality of the foregoing, the achievement or accuracy of any forecasts, projections or other forward looking information contained or referred to in this report. Investors should make and rely upon their own enquiries before deciding to acquire or deal in the Company’s securities.

This presentation and contained information is not for circulation within the USA

## COMPETENT PERSONS STATEMENT

The information in this presentation that relates to the Queensland projects in the Drummond Basin and the Lithium Hard Rock projects in the Pilabara are based on information compiled by Mr. Roger Jackson, a Director and Shareholder of the Company, who is a Fellow of the Australasian Institute of Mining and Metallurgy (MAusIMM), Member of Australasian Institute of Geoscientists (AIG) and a Member of Australian Institute of Company Directors (AICD). Mr. Jackson has sufficient experience which is relevant to the style of mineralisation and type of deposits under consideration and to the activity which he is undertaking to qualify as a Competent Person as defined in the 2012 Edition of the “Australasian Code for Reporting of Exploration results, Mineral Resources and Ore Reserves”. Mr. Jackson consents to the inclusion of the data contained in relevant resource reports used for this announcement as well as the matters, form and context in which the relevant data appears.

The exploration results contained in this announcement were first reported by QXR on 27 May 2023, 17 June 2023, 26 July 2023, 21 August 2023 and 20 September 2023. QXR confirms that it is not aware of any new information or data that materially affects the exploration results previously announced.

# BATTERY MINERALS SUITE

## TIER-1 LOCATIONS



### LITHIUM BRINES

Large Brine Project  
USA - Established infrastructure  
Drill ready; Pathway to development



### LITHIUM HARD ROCK

4 x Hard rock projects  
Pilbara WA - Prime location  
Pegmatites located - elevated lithium



### NICKEL

High grade 2% nickel-copper-cobalt  
Sweden - 6 projects  
Own 39% of private Bayrock company



### COPPER-GOLD-MOLY

Copper-Gold-Moly prospects  
Central Queensland  
New exploration to Mining Lease stage





# Experienced Board



**Steve Promnitz**  
Managing Director

Technical, Mgmt,  
Financial expertise  
Previously created  
\$2Bn lithium company  
from startup



**Maurice Feilich**  
Executive Chairman

Investment market  
expertise 30 years  
Small cap resources  
specialist



**Roger Jackson**  
Non-Exec Director

Qualified geologist  
Exploration, mining,  
minerals marketing;  
Chair AHK, VTX



**Dan Smith**  
Company Secretary

Non-Exec Director  
Finance specialist;  
Company Secretary;  
Chair of DY6



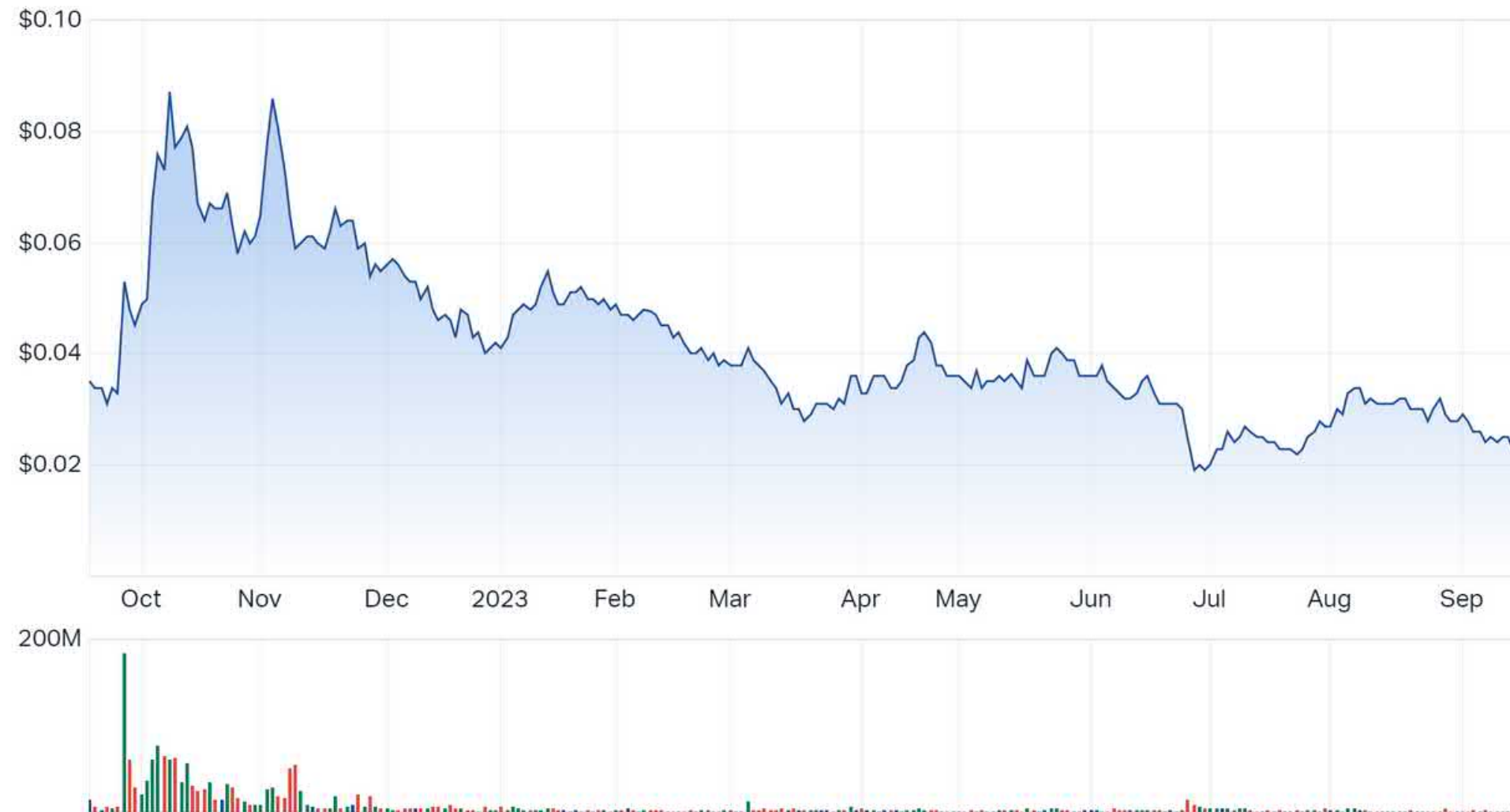
**Ben Jarvis**  
Non-Exec Director

Strategic advisor;  
Investor relations  
expertise; Multi-sector  
experience

# CORPORATE SNAPSHOT

## ASX:QXR

QXR ASX Chart



### Top 20 Shareholders 44%

Largest Shareholders

Suzhou UltraClean Tech 8.7%

Zamia Metals 4.7%



Market Cap

**A\$21M** at 3 Oct 2023



Shares on Issue

**896 M**

Options: 60M, Strike prices from 2c to 6.8c



Cash Position

**A\$1.8M** at 30 June 2023

Other investments valued c.A\$1.2M



Share Price Range 52 Wk

**\$ 0.018 - \$0.092**



# LIBERTY LITHIUM

## LARGE USA BRINE PROJECT

**Large Lithium Resource Potential  
in Prime Location with Good Infrastructure**

**One of largest single USA brine projects**  
10,250 Ha (25000 acres)  
Two times size of Sydney Harbour

**Similar to major US brine projects:**

Albemarle Silver Peak NV 4500Ha

Pure Energy NV 9400Ha

Ameriwest - 3PL NV

Nevada Sunrise - Gemini

**Sealed road access, power, water**

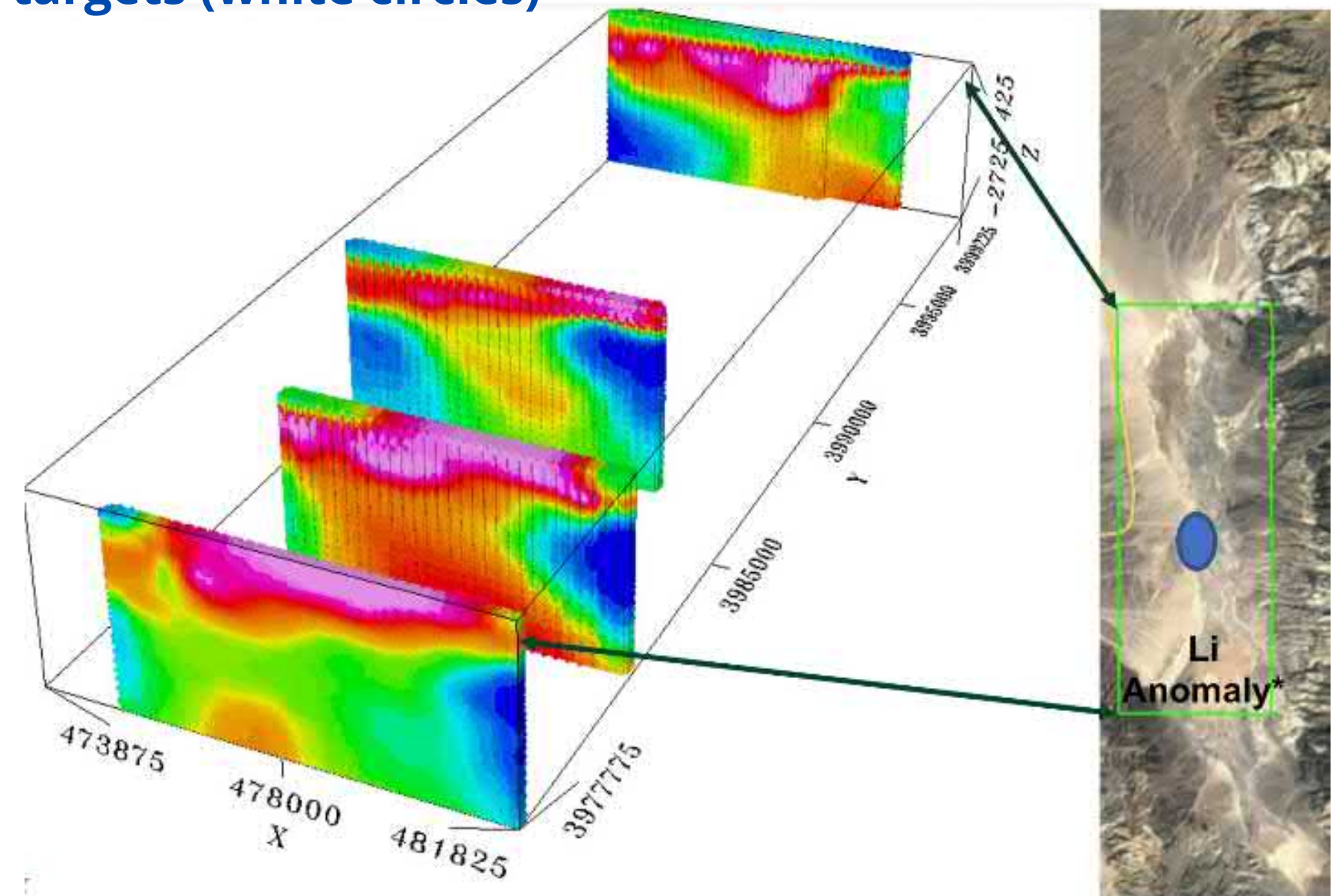
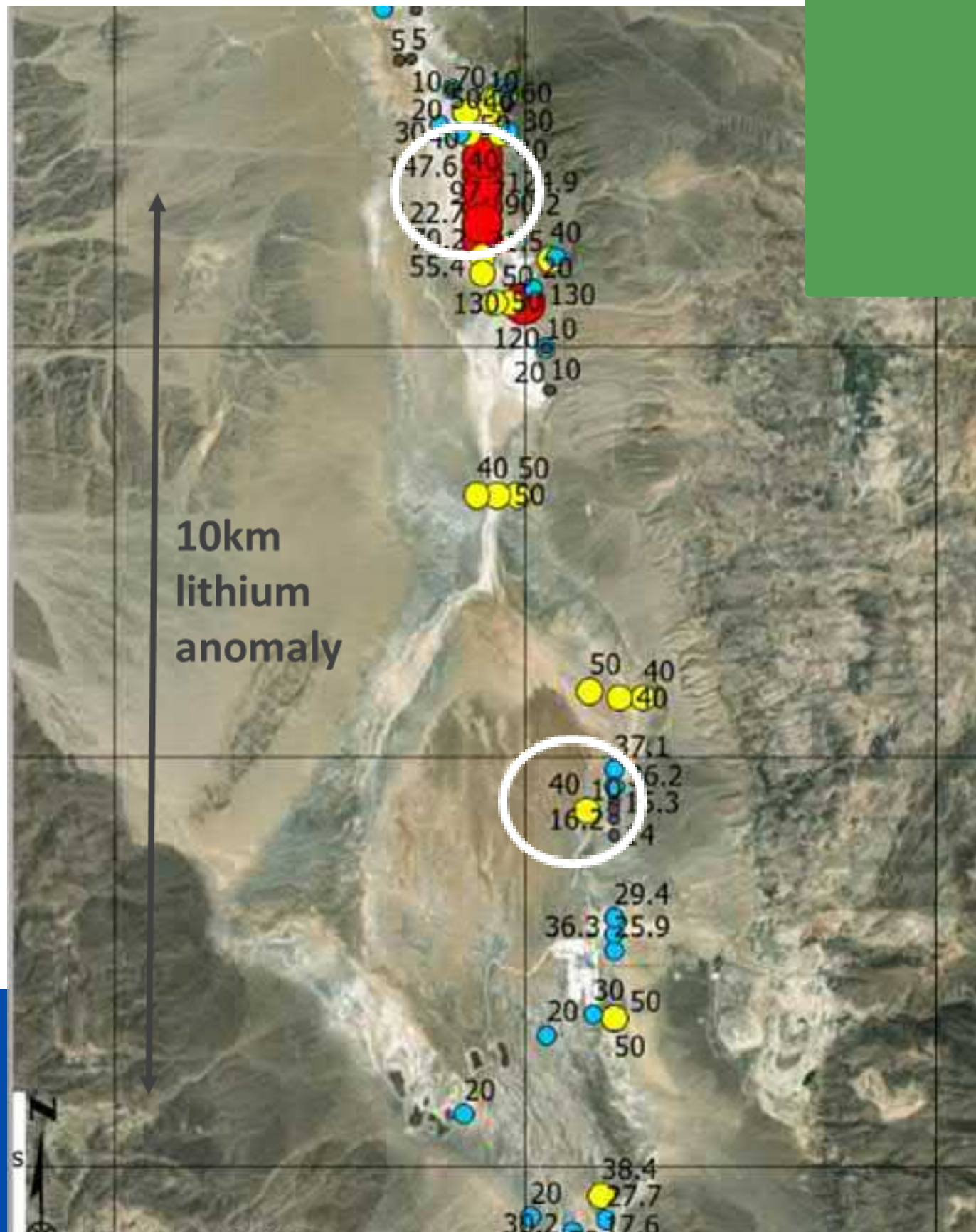




# LIBERTY LITHIUM

## SCALE - 10KM ANOMALY

Surface auger results up to 215 mg/L lithium over 10km  
Geophysics (MT) shows potential brine aquifers (in red)  
Drill targets (white circles)





# LIBERTY LITHIUM LOOKALIKE TO MAJOR PROJECTS

Similar Characteristics  
to nearby Albemarle mine / Clayton Valley

- Large Enclosed Basin
- Arid Climate
- Geology similar

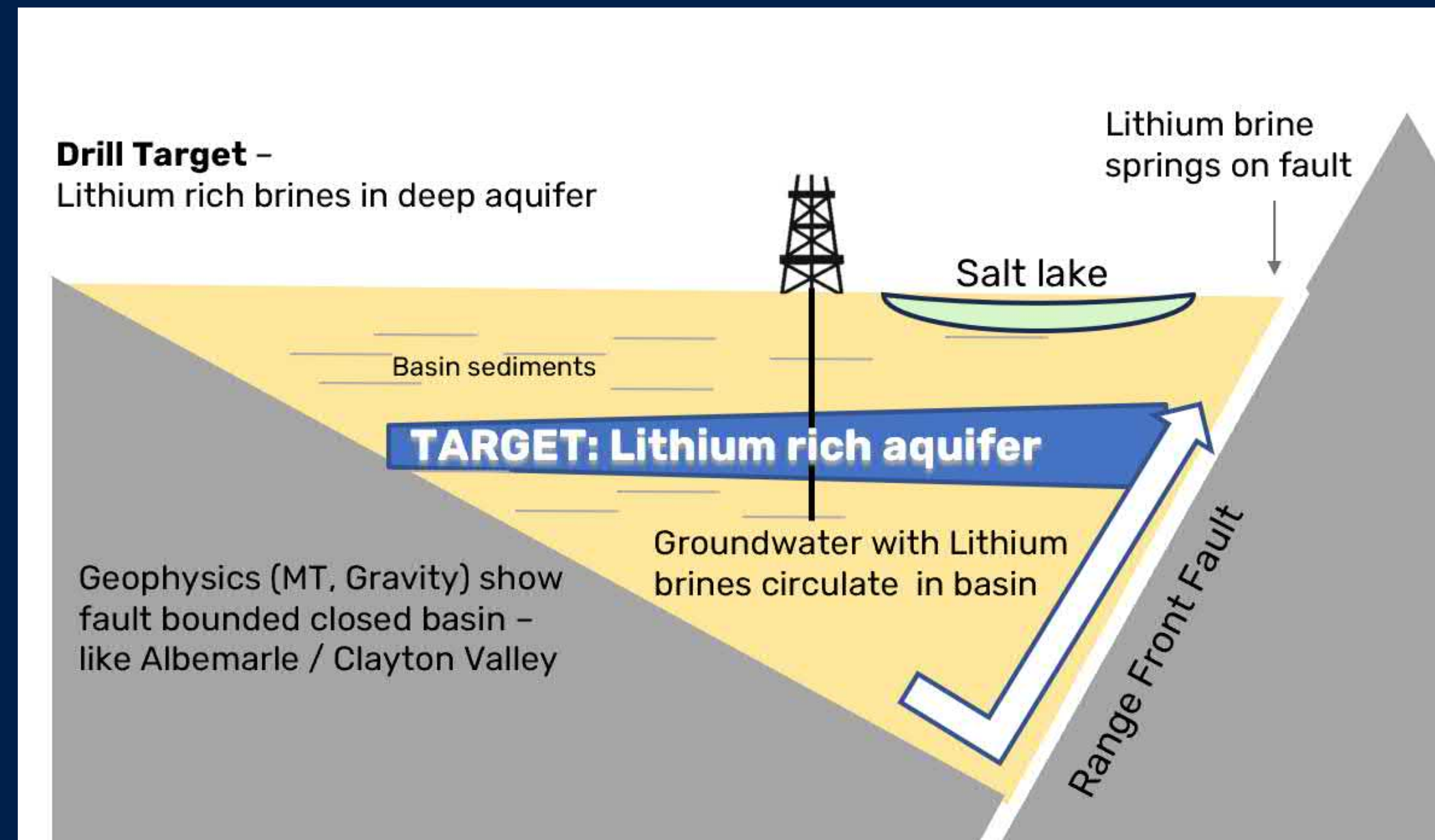
Target: Aquifers with Lithium rich Brines

Model: Warm geothermal fluids at surface

Drilling: Oct/Nov/Dec schedule



Lithium rich  
geothermal springs at surface

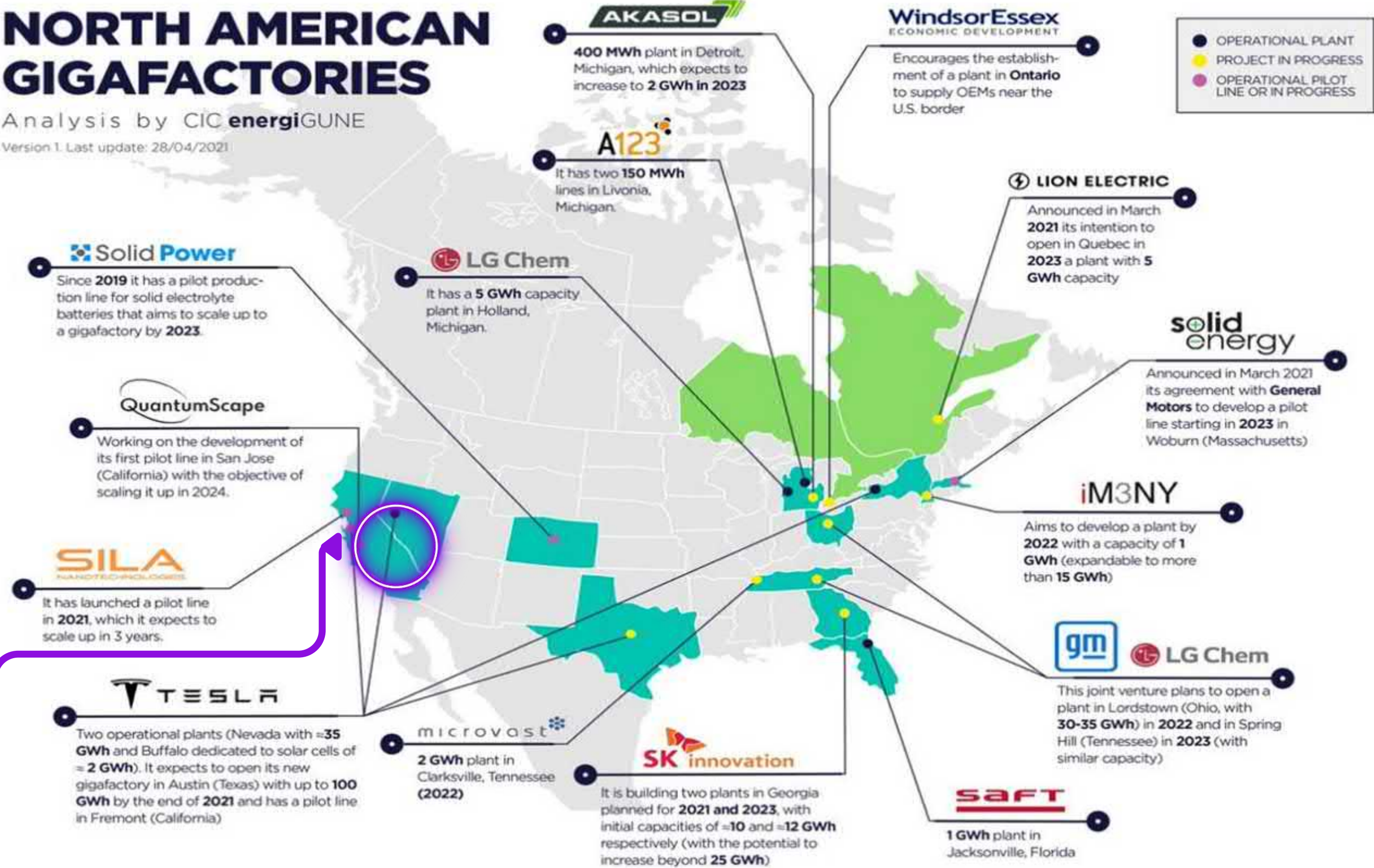




# LIBERTY LITHIUM

## WELL LOCATED - NORTH AMERICAN GIGAFACTORIES

Analysis by CIC **energiGUNE**  
Version 1. Last update: 28/04/2021



Liberty Lithium  
Brine Project



# PERMITTING PATHWAY

## POSITIVES: NEARBY OPERATIONS INFRASTRUCTURE POTENTIAL GOVT SUPPORT

40km from major 150 year old salt evaporation operation - Seales Valley  
Sealed roads; Power; Brackish water available linked to mineral claims  
Regulators supportive of new battery minerals operations

### California Support to other projects

#### Inflation Reduction Act

CTR Geothermal lithium -  
Governor on-site for opening  
US\$1.4 Bn from Fuji Electric





# LIBERTY LITHIUM - FAVOURABLE TERMS



Option to Purchase Agreement and an Operating Agreement  
To Earn 75% Interest of the Liberty Lithium Brine Project  
From Vendor - IG Lithium LLC.



QXR subsidiary  
Liberty Lithium

EARN-IN PERIOD	Earn-in to 75% of IG Lithium LLC that holds project; QXR manages project
OPTION PAYMENTS	US\$2 million over 27 months (5 tranches) incl. US\$300,000 in Oct 2023
WORK COMMITMENTS	US\$1.2 million exploration over 27 months; Also maintain title
OTHER ITEMS	Ancillary payments US\$75,000 per year Other members free carried to DFS

# Liberty Lithium - Project Timeline



**Q3,23**

Finalise documents  
Finalise team  
Finalise finance



**Q4,23**

Drill rig to site  
Drill 2 holes  
Intersect lithium aquifers  
Brine for testwork



**Q1-Q2,24**

Initial results  
If positive;  
Drill 4 more holes  
Further testwork



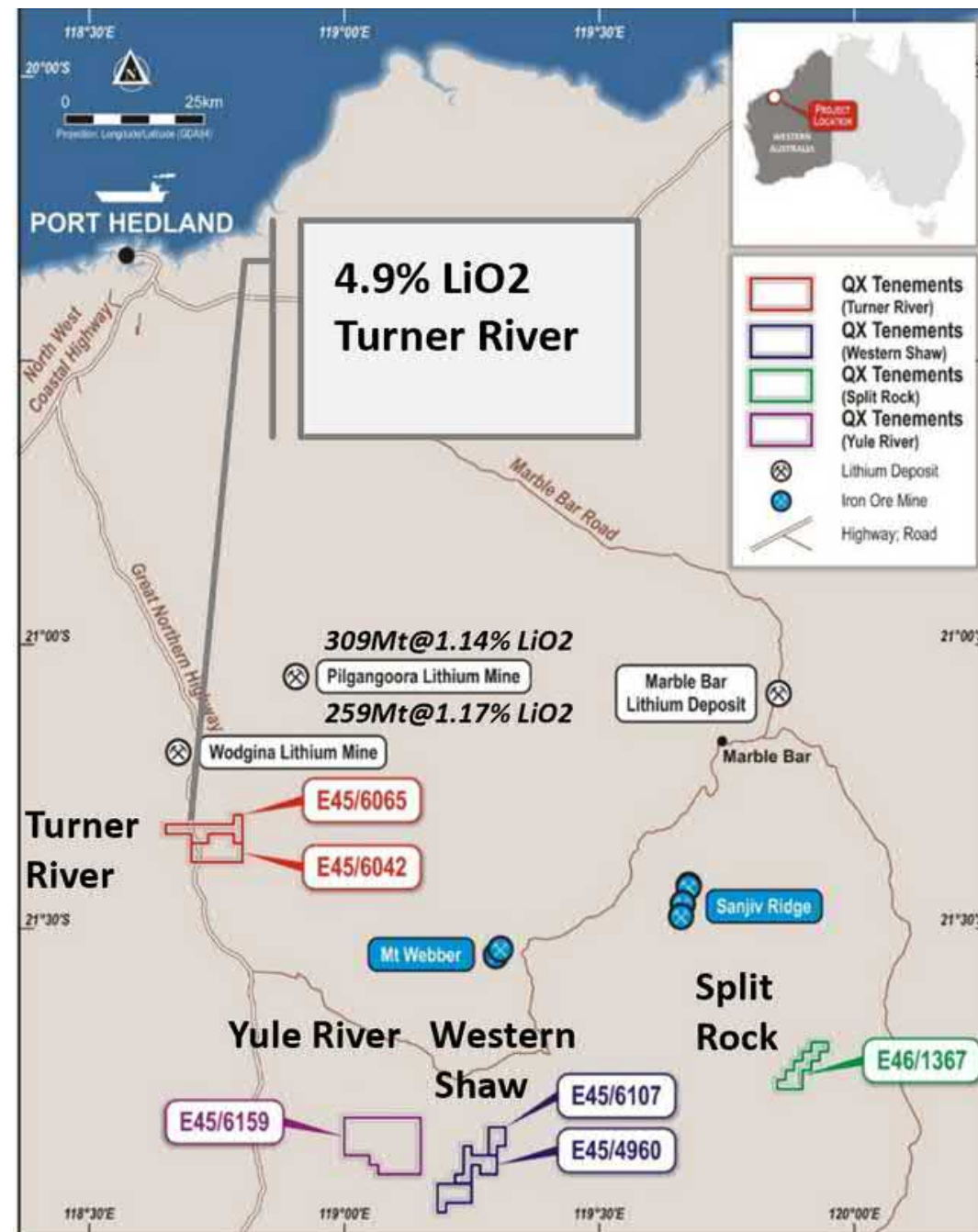
**Q3,24**

Initial resource  
Start Fesibility Study  
Engage with end users  
Plan expanded drilling  
Finalise processing



# LITHIUM HARDROCK PILBARA - 4 PROJECTS

Rapid Development Potential



## Pilbara - Prolific Proven Hardrock Lithium Province

Large Producers Nearby; Numerous New Discoveries



## Four Projects - Numerous Pegmatites Discovered

Pegmatites at Turner River, Western Shaw; Discoveries nearby

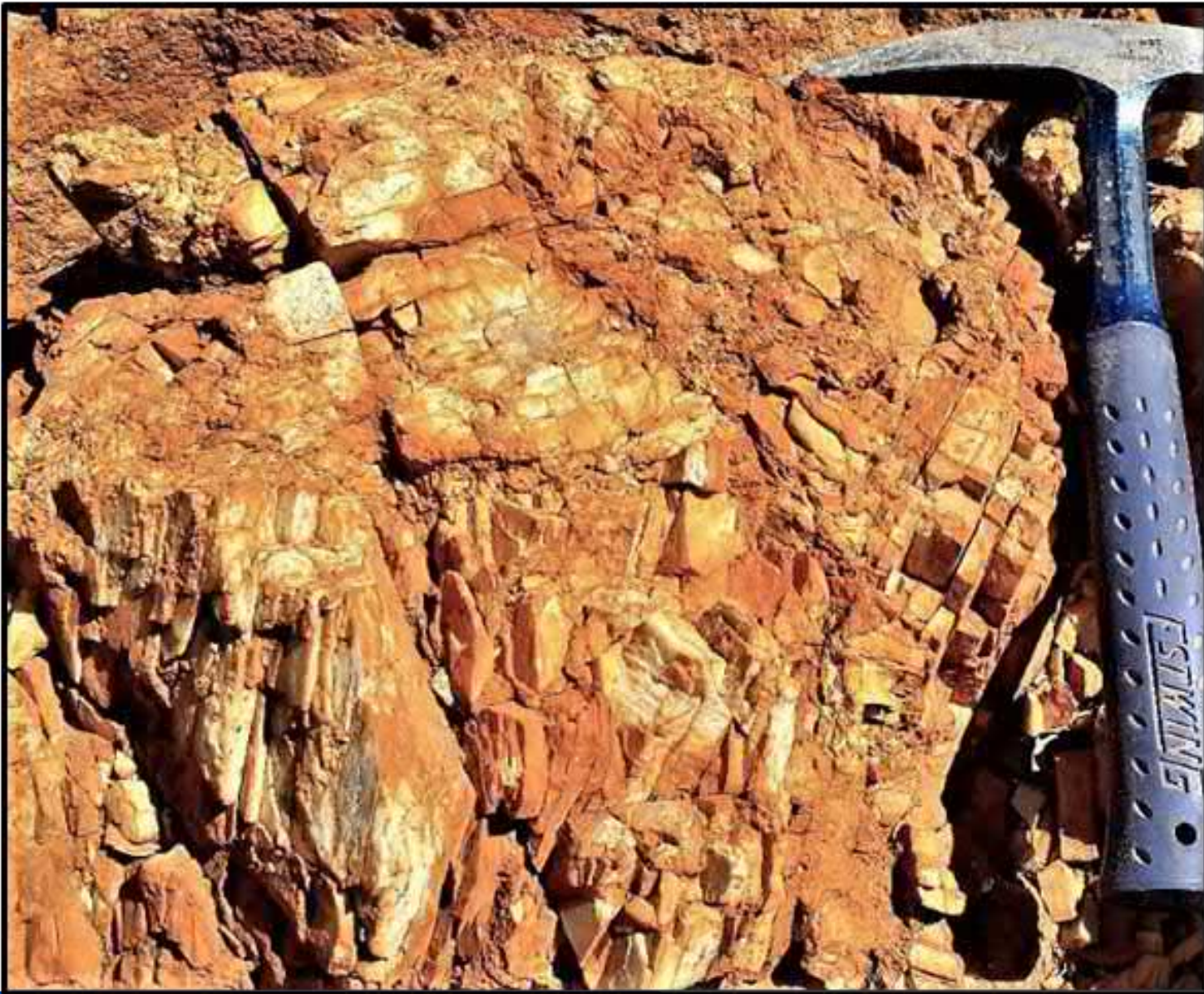


## Growth Potential - Field Work Underway; New Pegmatites

Short timeline from discovery to production



# 4 HARDROCK PROJECTS



**Turner River - 15km from Large Wodgina Mine**

**- Large Lithium Halo; Rock samples 4.9% LiO<sub>2</sub>**

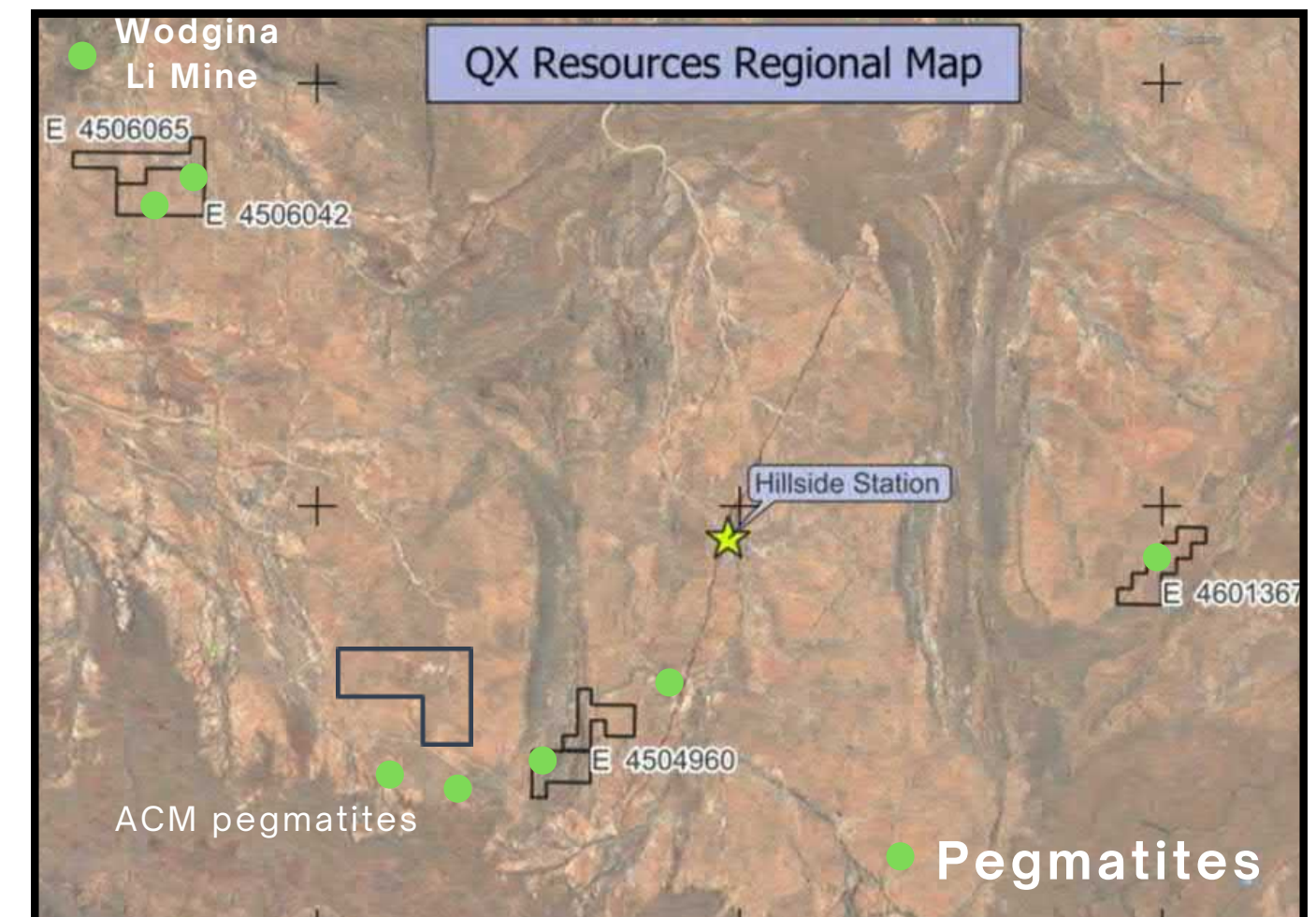
**Western Shaw / Yule River / Split Rock**

**- New Pegmatites Discovered**

**- Target: Granitoid/Greenstone Contact**

**Pegmatites**  
**- Western Shaw**

New Pegmatites discovered  
Sampling results due late Oct  
Airborne survey - October  
Recent Discoveries Nearby - ACM

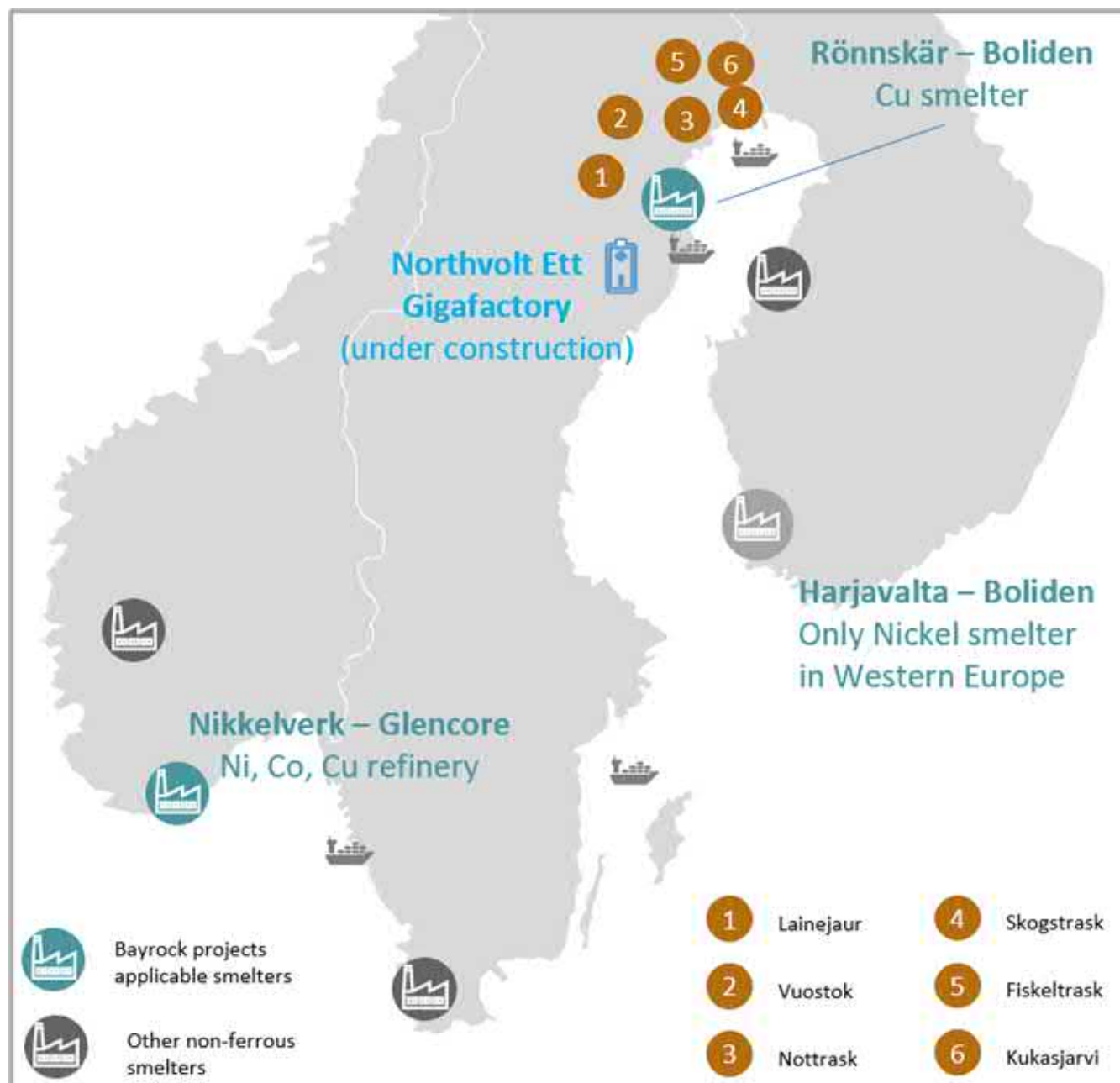




# NICKEL - COPPER

## SWEDEN - BAYROCK

QXR holds 39% Investment in Private Company



### High Grades in Past Mining District

Two Projects with 2.1% Nickel; 0.7% Copper - Lainejaur, Vuostok



### Six Projects - Large Area 38,000 hectares (94,000 acres)

District Scale Play to Truck material to Central Concentrator



### Growth Potential - EU Battery Minerals Support

Friendly Tier-1 jurisdiction close to battery end users





# LAINAJAUR

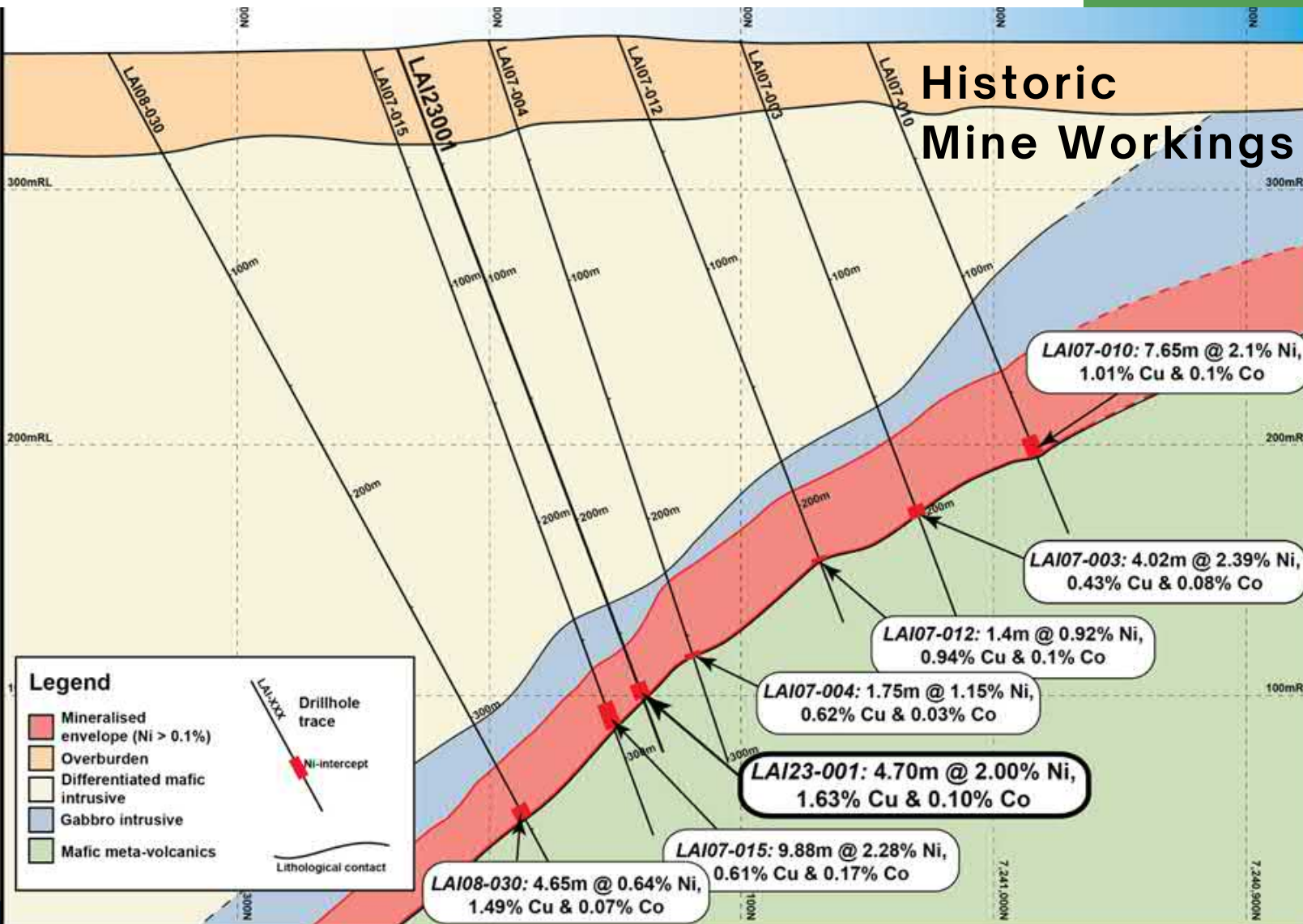
## MAJOR NICKEL PROJECT

**Nickel - Copper - Cobalt Massive Sulphides**  
**High Grade Resource - Fast track to Development**  
**Untested Extensions / Targets in Geophysics**

JORC Resource 460,000t @ 2.2% Ni, 0.7% Cu (3.4% Ni Eq)

High metal recoveries in testwork

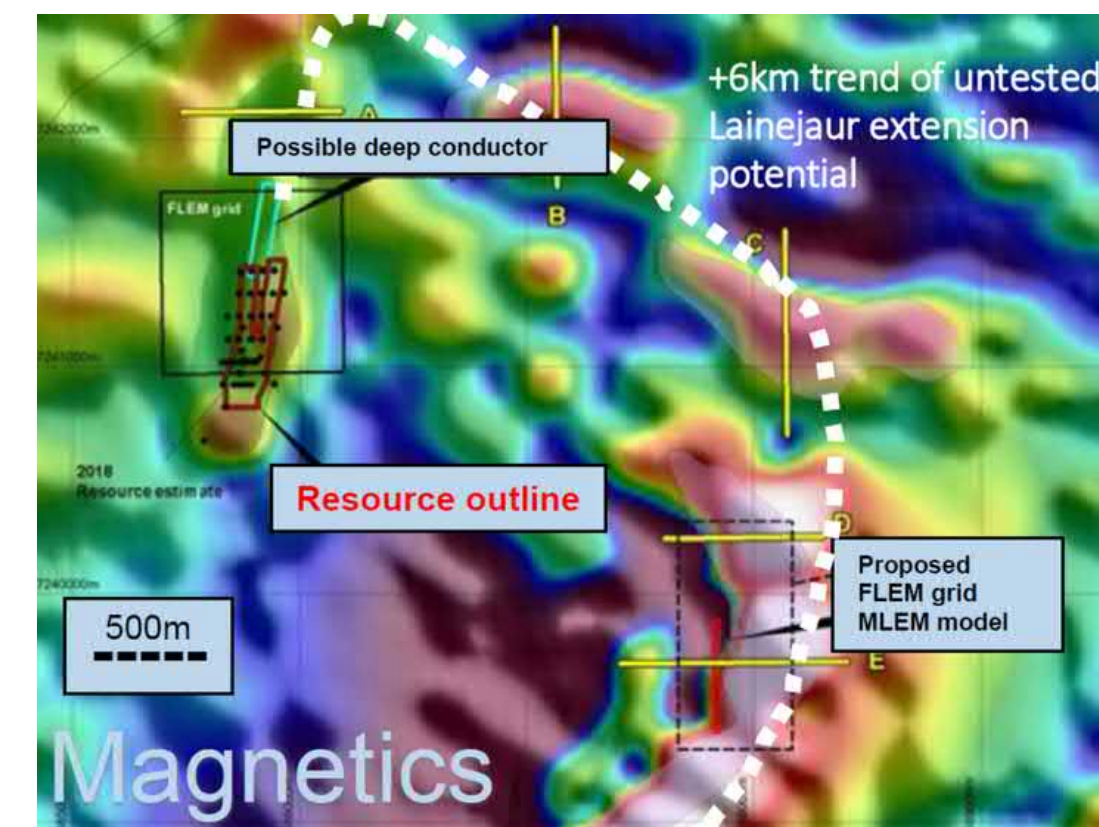
Near to Infrastructure - Roads, low cost power



**Open at Depth**

**High Grade Drill Results**

7.6m @ 2.1% Ni, 1.0% Cu, 0.1% Co  
9.9m @ 2.3% Ni, 0.6% Cu, 0.2% Co  
5.2m @ 2.6% Ni, 0.1% Cu, 0.1% Co  
4.7m @ 2.0% Ni, 1.6% Cu, 0.1% Co







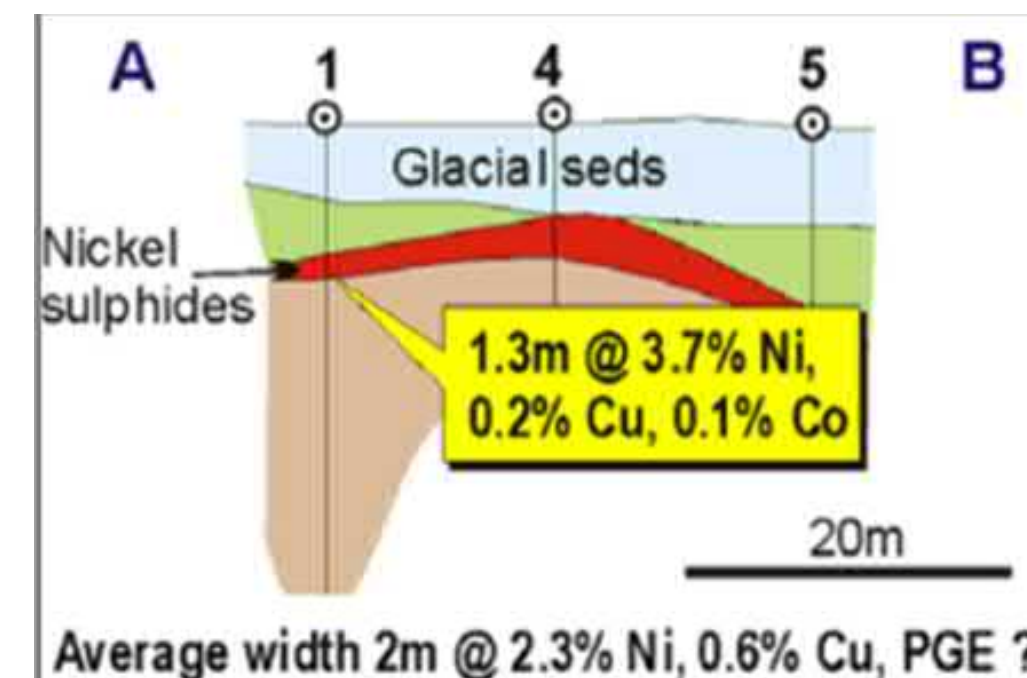
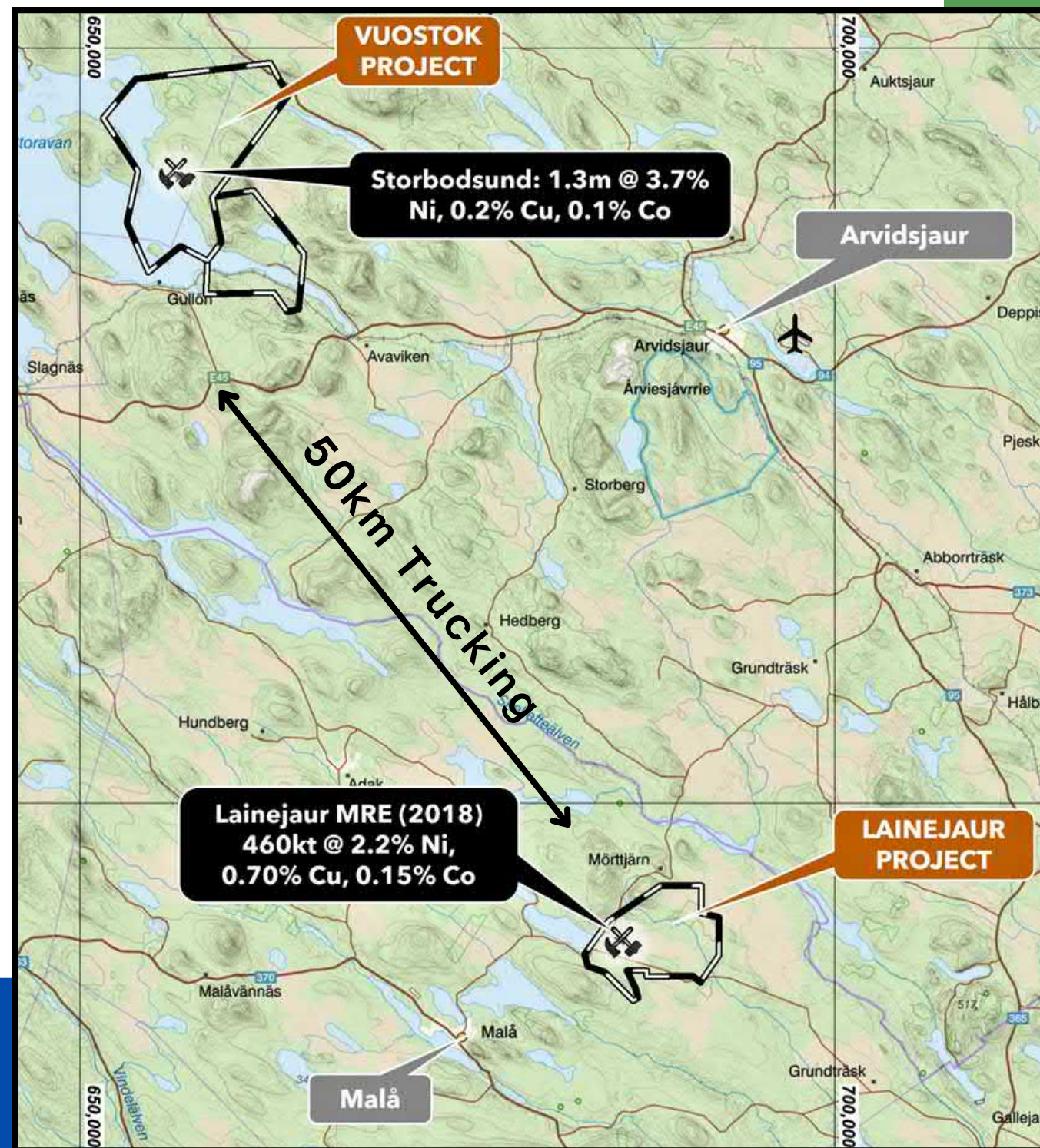
# VUOSTOK

## FURTHER NICKEL NEARBY

**Nickel - Copper Massive Sulphides Near Surface (8 holes)**  
**Drilling - 6.2m@ 1.2% Ni, 2.2% Cu; 2.4m@ 1.3% Ni, 5.3% Cu**  
**0.7m @ 3.2% Ni, 1.0% Cu**

**High Grade - Trucking distance from Lainejaur**

Recent Drilling - massive sulphides near surface (5-18m deep)  
District scale development potential

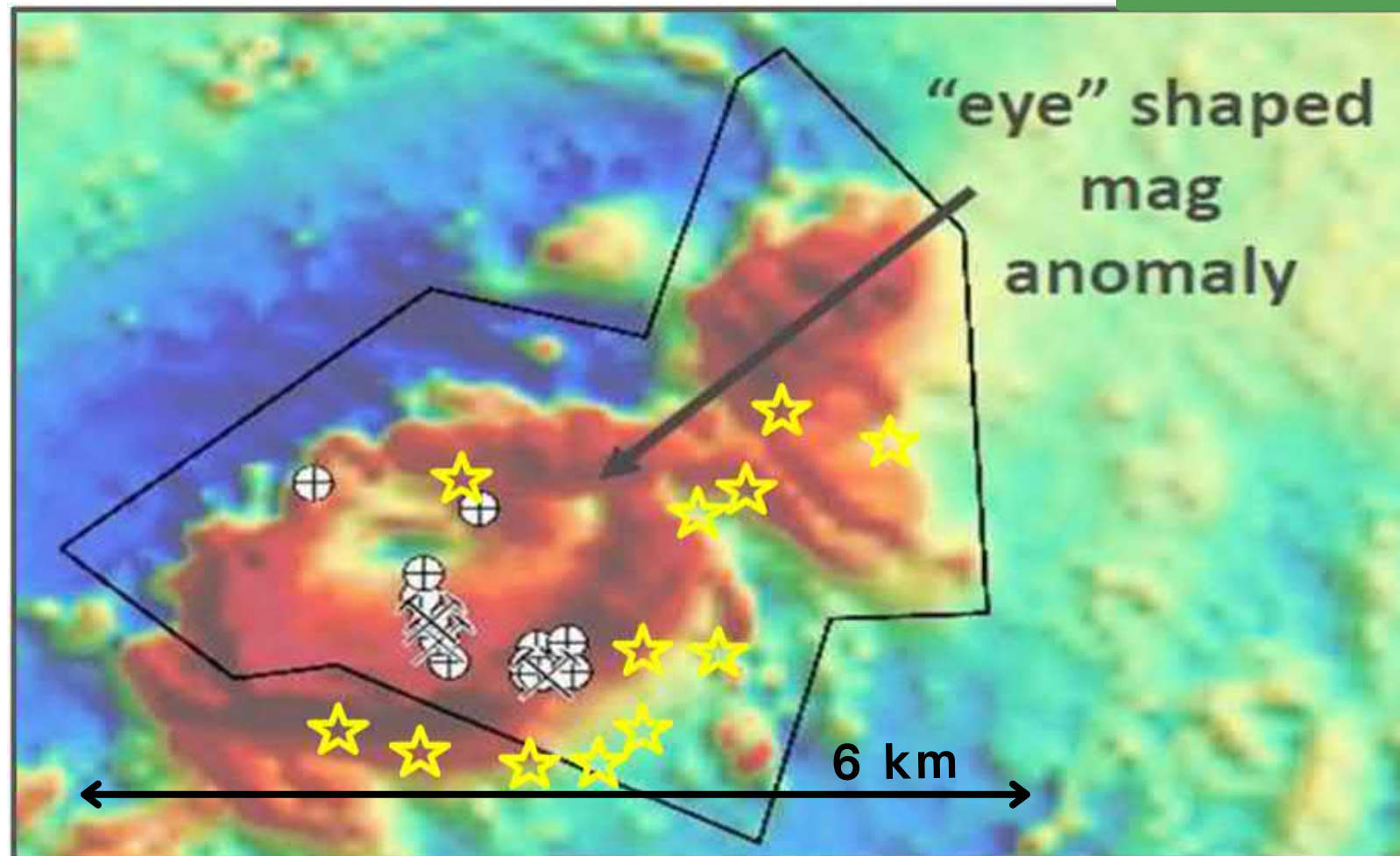






# NOTTRASK

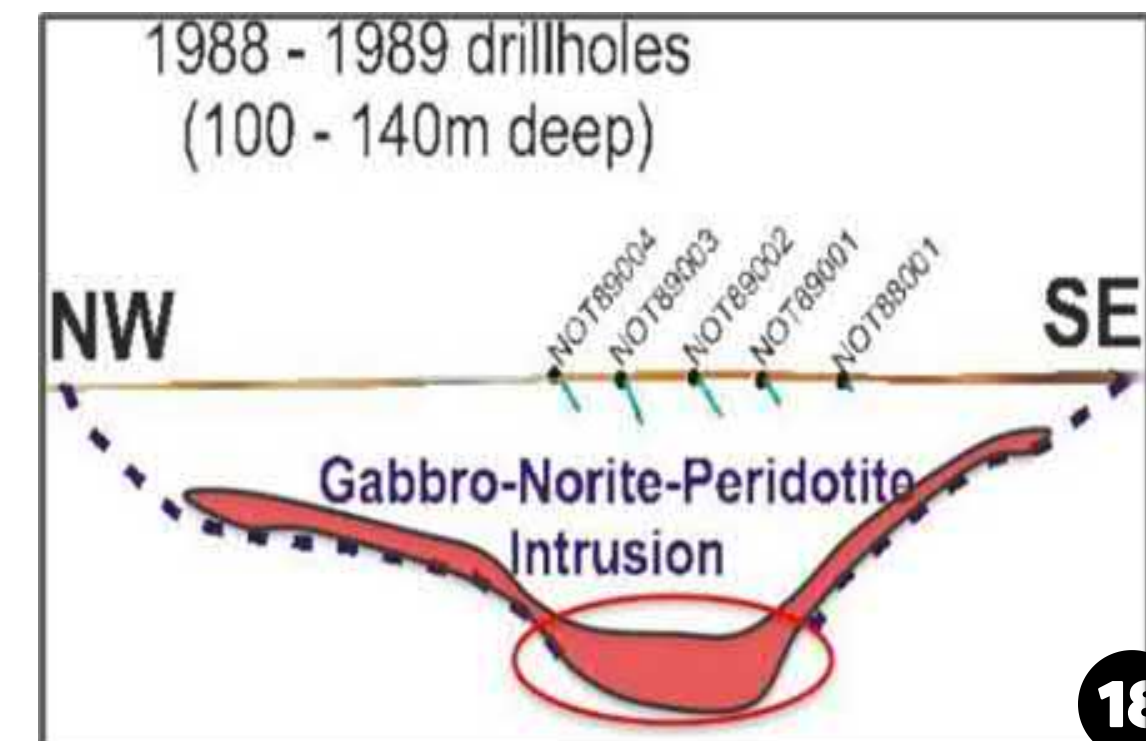
## UNTESTED COMPANY MAKER



Anomaly = 6km x 3km  
Stars = Sulphides

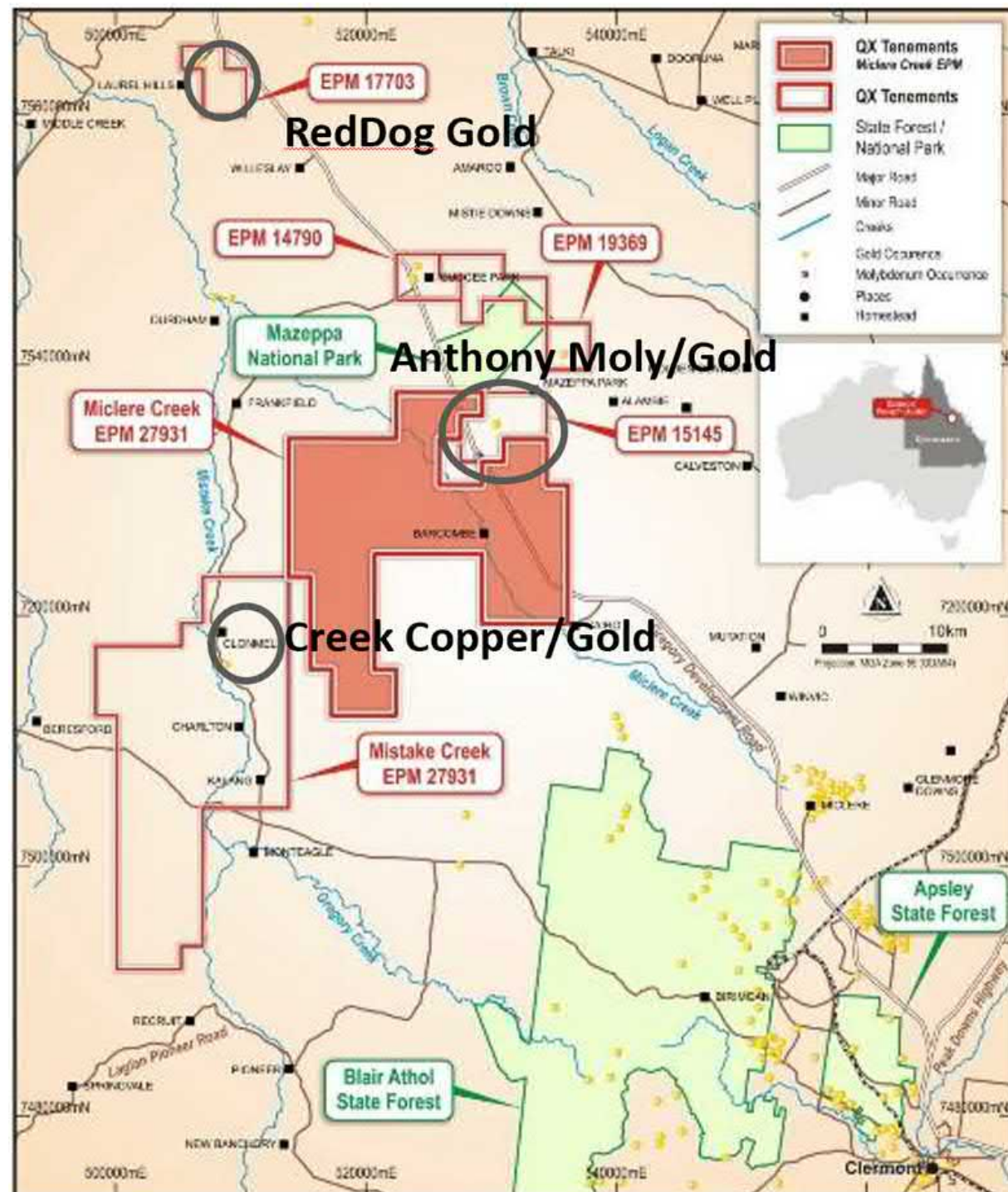
**Nickel - Copper Boulders at Surface**  
**Target Similar to Major Mines - Sakatti, Nova**  
**Massive Target at Depth Untested**

High grades: Rock chip samples up to 1.2% Ni, 1.8% Cu  
Untested: Only one deep drillholes to target below 160m  
Resemblance to Kevista (142Mt @ 0.22% Ni, 0.35% Cu)  
& Sakatti (Finland), Nova (Australia)





# COPPER-GOLD-MOLY QUEENSLAND



## Porphyry Cu-Au-Mo Projects in Past Mining District

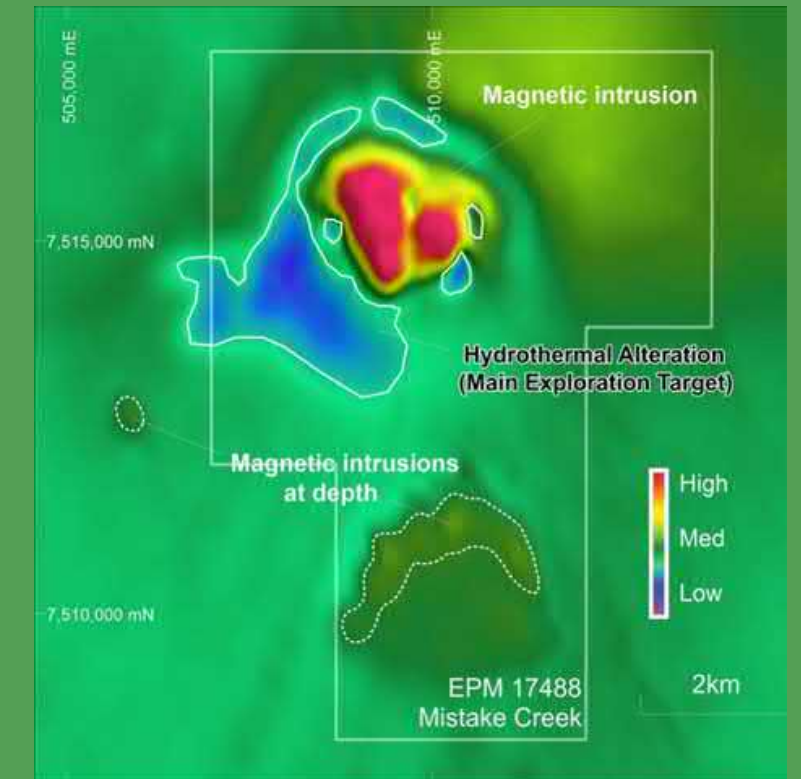
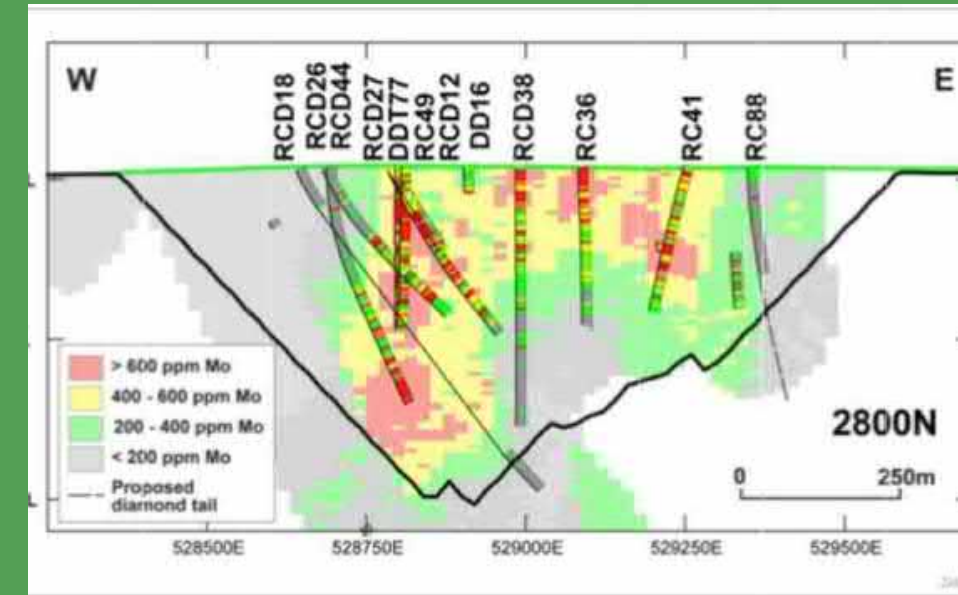
Anthony Deposit: 110 million pounds Mo incl 20mt at 800 ppm Mo

## Creek Copper-Gold Porphyry

Regional magnetic feature; IP anomaly: Cu-Au in soils

## Gold Veins at Surface - Drill ready

Red Dog: 7m @ 7.1 g/t Au at surface in trenches





# Key Takeaways

## Battery Minerals Portfolio

- Lithium Brines; Lithium Hardrock; Nickel; Copper



## Projects with Scale - Team with Proven Value Creation

### Tier 1 Locations

Lithium Brines in Drilling - late Q4, 2023

Lithium Pegmatite Discoveries - Q4,23 Q1,24

Progress Bayrock Nickel into Listed Company

# Key Catalysts





**TIER-1 LOCATIONS**  
**LITHIUM HARD ROCK**  
**LITHIUM BRINES**  
**NICKEL SULPHIDES**  
**COPPER\_GOLD\_MOLY**

# **QX RESOURCES**

## **THE X FACTOR**

### **IN BATTERY MINERALS**

## **CONTACT**



#### **EMAIL**

steve@qxresources.com.au



#### **PHONE NUMBER**

+61 42 3333 296



#### **WEBSITE**

www.qxresources.com.au

